

BROWN COUNTY SCHOOLS
**VISION &
MISSION**



BROWN COUNTY
SCHOOLS

VISION

World Class Opportunities.
Small School Relationships.
Lifelong Impact.



MISSION

Brown County Schools provides the highest quality educational experiences where all students are safe, valued, inspired, civically engaged, and globally connected.



Business of Educating Kids



BROWN COUNTY
SCHOOLS

There is so much more to educating kids . . .

- Board Relations
- School Finance
- Transportation
- Facilities
- Food Service

Let's bust some myths and play



THE BIG BUDGET BUCKETS

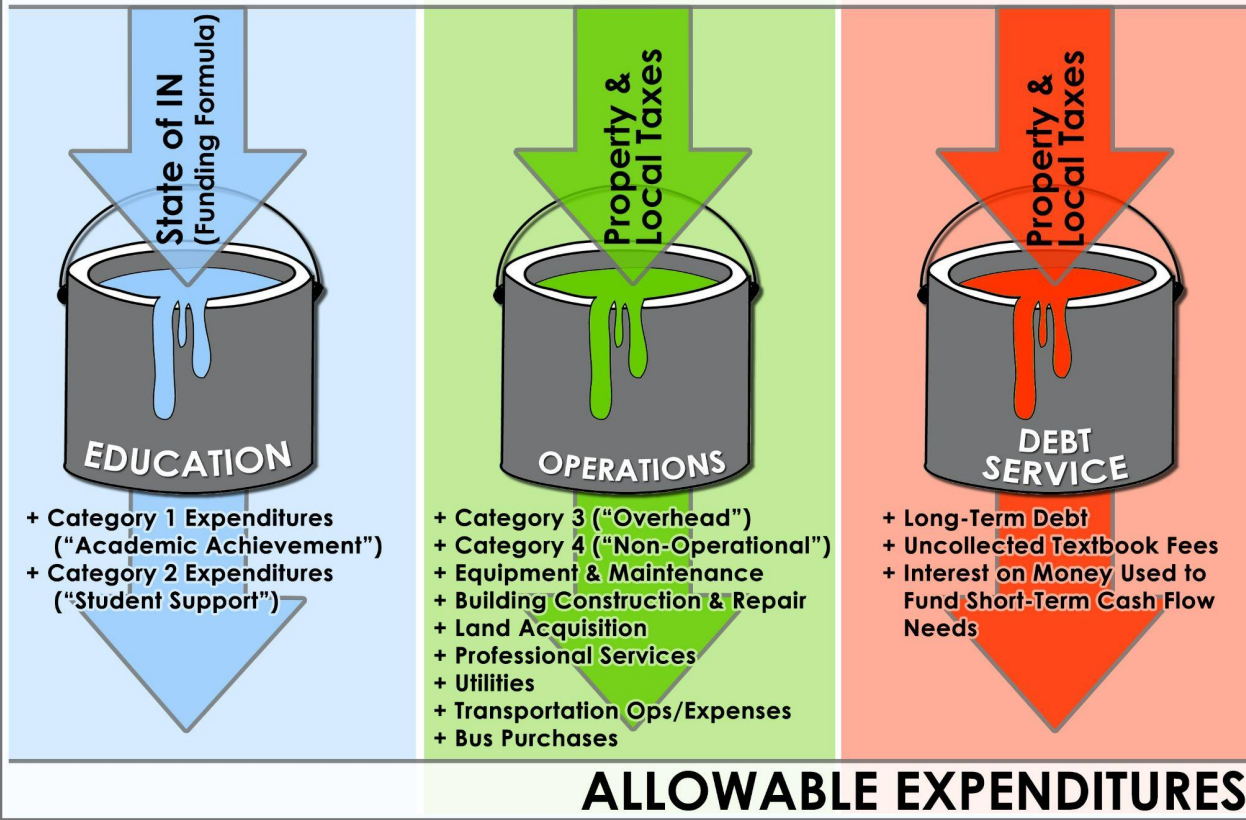


BROWN COUNTY
SCHOOLS



SCHOOL FUNDING STRUCTURE

REVENUE SOURCES



THE BIG BUDGET BUCKETS



BROWN COUNTY
SCHOOLS

Other funds:

- Referendum
- Rainy Day
- Grants
- Donations

Annually adopted by School Board

Certified by Department of Local
Government Finance

Audited by Indiana State Board of
Accounts

Also within the Finance department...

THE BIG BUDGET BUCKETS



BROWN COUNTY
SCHOOLS

Challenges and Opportunities

- ❖ Turnover
- ❖ Declining enrollment
- ❖ Strategic budgeting
- ❖ Funding the YES

Transporting Our Precious Cargo



BROWN COUNTY
SCHOOLS

By the Numbers:

- Brown County-316 square miles/400 road miles
- BCHS/BCMS/Sprunica/Helmsburg/Van Buren
- Single Run-Time and Distance/Shuttle
- Contracted Bus Routes-27
- Corporation Bus Routes-8 gen ed/5 sped/1 substitute/1 IDS/McKinney Vento
- 42 total and approximately 1100 miles daily
- 15 field/sport trips per week average
- New 72 pass bus \$130,000
- New 15 pass bus \$98,000
- 33 units in fleet
- Budgeted Fuel Costs \$80,000

Transporting Our Precious Cargo



BROWN COUNTY
SCHOOLS

Driver Requirements

- Commercial Drivers License-26001 lbs/16 pass
- Entry Level Driver Training-Federal Mandate
- Trainer Provider
- Theory/Range/Road
- Indiana Dept of Education-Blue/Yellow Card
- Certified Medical Examiner-2 years
- Random Drug Testing
- Expanded Criminal History and DCS check
- 3rd Party Testing Site

Misc. Info

- Weather
- Cameras-interior and stop arm
- Indiana State Police Inspections

Transporting Our Precious Cargo



BROWN COUNTY
SCHOOLS

Challenges and Opportunities

- Budget
- Contract
- Personnel
- Supplies

BROWN COUNTY SCHOOLS
PK-ADULT
SYSTEM



BROWN COUNTY
SCHOOLS



HELMSBURG
ELEMENTARY SCHOOL

GRADES PK-5



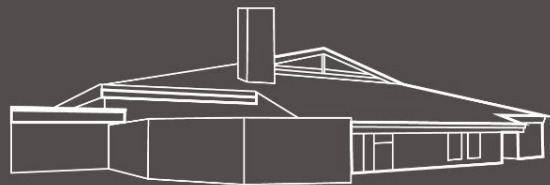
SPRUNICA
ELEMENTARY SCHOOL

GRADES PK-5



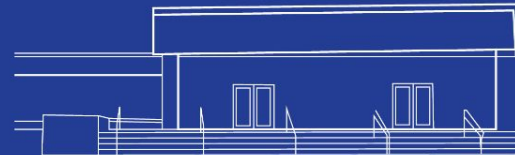
VAN BUREN
ELEMENTARY SCHOOL

GRADES PK-5



BROWN COUNTY
MIDDLE SCHOOL

GRADES 6-8



BROWN COUNTY
HIGH SCHOOL

GRADES 9-12



BROWN COUNTY
EDUCATIONAL SERVICE CENTER

CRC | ADMINISTRATIVE OFFICES | BROWN COUNTY EARLY CHILDHOOD CENTER



Maintenance at BCS



BROWN COUNTY
SCHOOLS

Challenges and Opportunities . . .

- Additional Facilities
- Staffing
- Custodial vs. Maintenance
- On Call 24/7

Food Service at BCS

- Chartwells K12 School Dining Service
- FSMC Food Service Management Company
- Partnership with Brown County Schools
- 2022/2023 4th year of 5 year contract
- Brown County Schools SFA
- SFA School Food Authority
- USDA requires FSD Food Service Director
- Regulated by USDA & IDOE
- Meal operations SNP, CACFP, SFSP
- Serve students breakfast, lunch and dinner



BROWN COUNTY
SCHOOLS

Food Service at BCS



BROWN COUNTY
SCHOOLS

Challenges and Opportunities

- Supply Chain Issue
Food, paper, cleaning
Spend less money
if not substituting
- Return to Traditional Eligibility
Free, Paid, Reduced
If the USDA would
go back to all free

MythBusters



BROWN COUNTY
SCHOOLS

School Finance

- Money doesn't follow the student. MYTH
- You can pay bills in a school district out of any fund. MYTH
- Cutting funding doesn't affect student outcomes. MYTH

Transportation

- All buses are required to have seatbelts. MYTH
- The district can deny transportation to a student. Partial MYTH
- A school bus driver must be 21 years of age to drive a school bus. FACT

Food Service

- BCS pays more money to outsource food service. MYTH
- Students are denied a school lunch if a negative balance is presented. MYTH
- Our lunch staff is employed by Chartwells not BCS. FACT

Facilities

- BCS would profit from selling the CRC. MYTH
- We can cut down to on one custodian per building. MYTH
- Our coaches take care of their respective athletic facility/field/course. MYTH

WE ARE
BROWN
COUNTY

